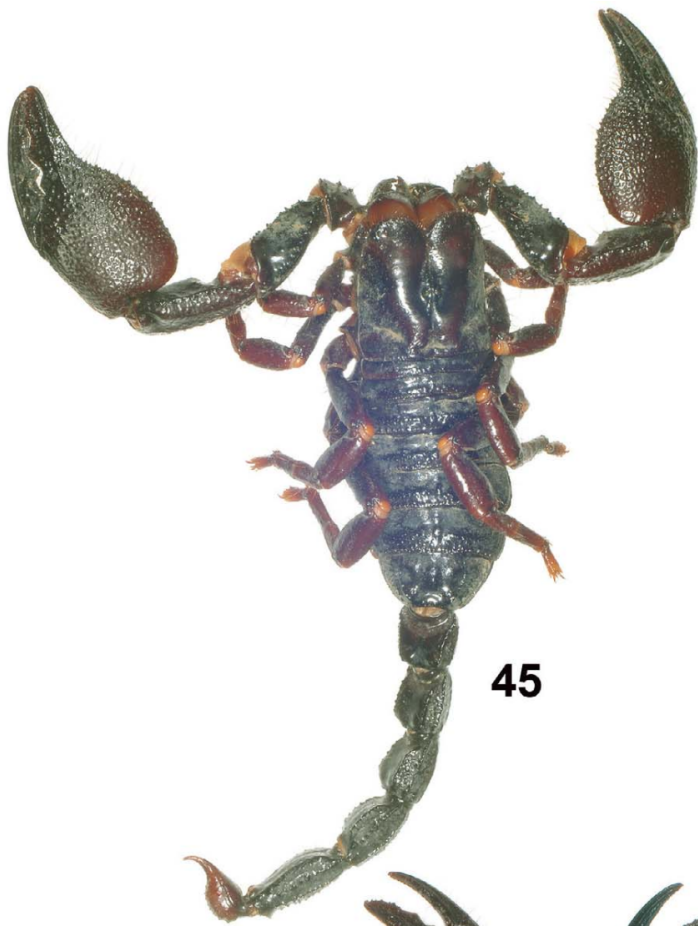
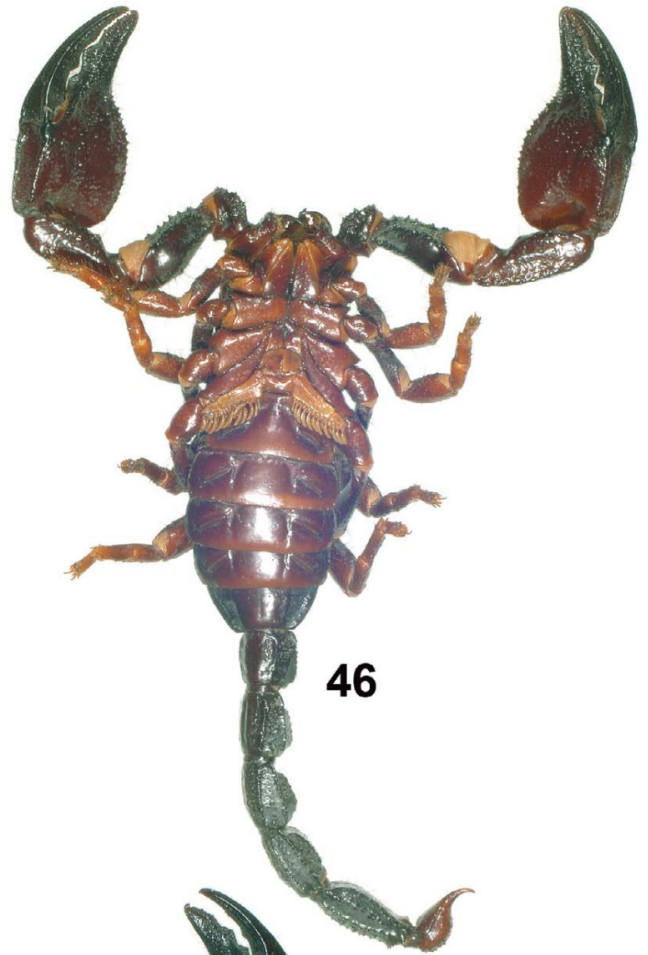


Pandinurus lowei [Kovarík,  
2012]



45



46



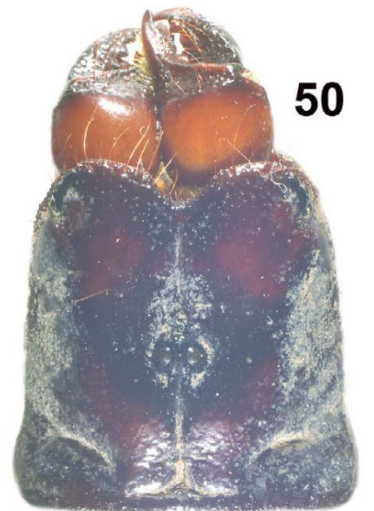
48



49



47



50

Figures 45–50: *Pandinus* (*Pandinurus*) *lowei* sp. n. 45–47. Dorsal and ventral views, and carapace with chelicerae, ♂ (98 mm) holotype. 48–50. Dorsal and ventral views, and carapace with chelicerae, ♀ (95 mm) allotype.

## Reference

Review of the Subgenus *Pandinurus* Fet, 1997 with  
Descriptions of Three New Species (Scorpiones,  
Scorpionidae, *Pandinus*)  
František Kovařík

---

Revision #1

Created 25 April 2024 04:32:06 by kkomodo

Updated 25 April 2024 04:33:03 by kkomodo