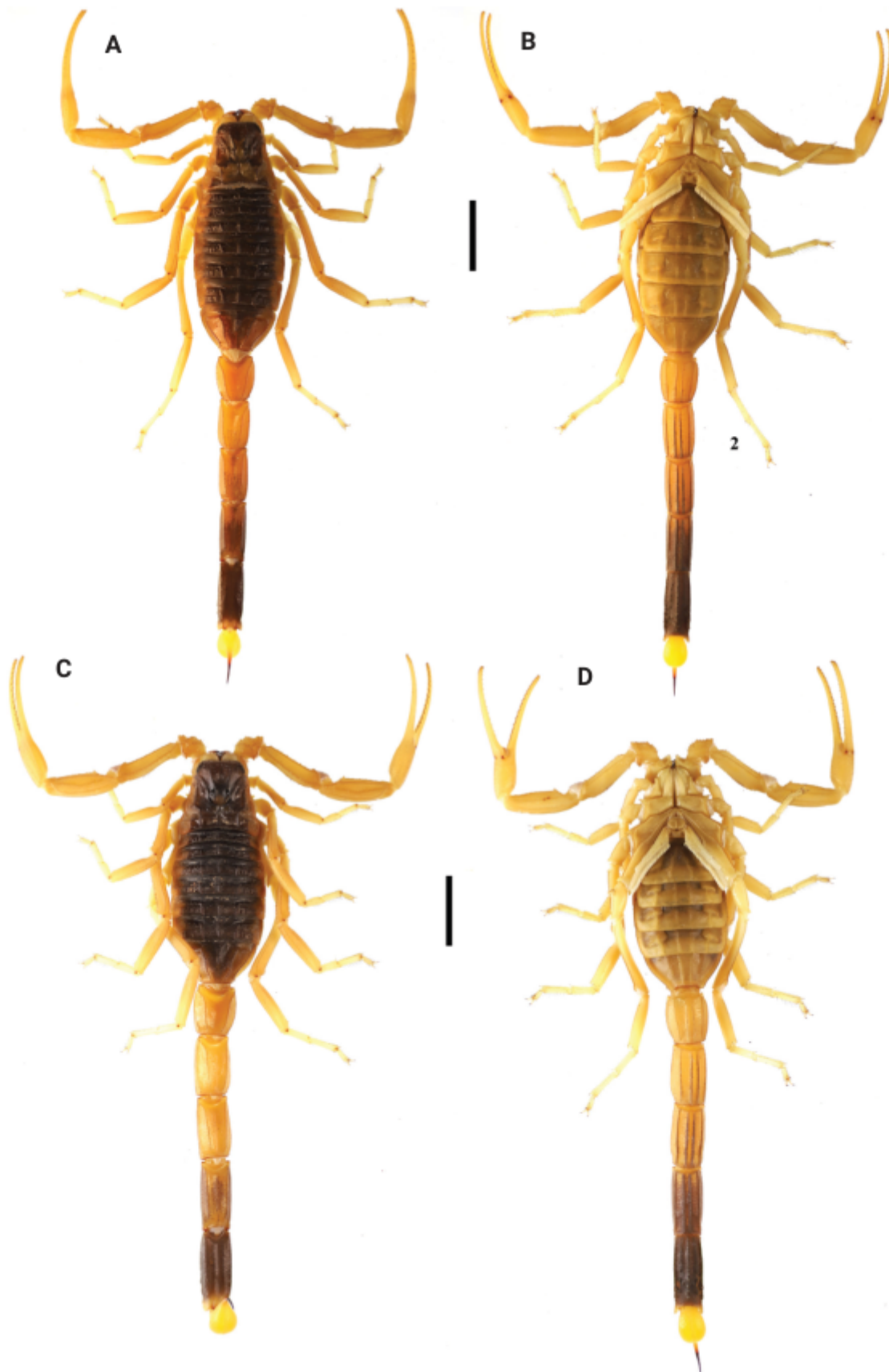


Leiurus hadb (Al-Qahtni, Al-Salem, Alqahtani & Badry, 2023)

Leiurus hadb (Al-Qahtni, Al-Salem, Alqahtani & Badry, 2023)



Figure 7. *Leiurus hadb* sp. nov., from Wadi Rawdat al-hadb, Riyadh region Saudi Arabia.



Figures 1. Habitus of *Leiurus hadb* sp. nov., male holotype and female paratype **A** male in dorsal view **B** male in ventral view **C** female in dorsal view **D** female in ventral view. Scale bar: 10 mm.

Table 1. Morphometric values (in mm) of the female holotype and one male paratype of *Leiurus hadb* sp. nov. from Majami al-Hadb Protected Area.

| | <i>Leiurus hadb</i> sp. nov. | <i>Leiurus hadb</i> sp. nov. |
|---------------------------------|------------------------------|------------------------------|
| | ♂ holotype | ♀ paratype |
| Total length (including telson) | 85.5 | 92.00 |
| Carapace: | | |
| - length | 8.5 | 9.4 |
| - anterior width | 6.1 | 6.4 |
| - posterior width | 10.6 | 11.2 |
| Mesosoma length | 24.2 | 22.4 |
| Metasomal segment I: | | |
| - length | 7.2 | 8.1 |
| - width | 5.3 | 6.4 |
| Metasomal segment II: | | |
| - length | 7.9 | 9.0 |
| - width | 4.6 | 4.3 |
| Metasomal segment III: | | |
| - length | 8.1 | 9.4 |
| - width | 4.2 | 5.2 |
| Metasomal segment IV: | | |
| - length | 7.9 | 9.7 |
| - width | 3.8 | 4.8 |
| Metasomal segment V: | | |
| - length | 10.0 | 11.7 |
| - width | 3.6 | 4.3 |
| - depth | 3.5 | 4.0 |
| Telson length | 9.4 | 9.1 |
| Vesicle: | | |
| - length | 5.3 | 6.1 |
| - width | 3.5 | 4.1 |
| Pedipalp: | | |
| - Femur length | 9.7 | 10.1 |
| - Femur width | 2.4 | 2.9 |
| - Patella length | 10.5 | 11.3 |
| - Patella width | 2.9 | 3.4 |
| - Chela length | 18.6 | 19.9 |
| - Chela width | 2.7 | 3.4 |
| - chela manus ventral | | |
| - length | 5.7 | 6.3 |
| Movable finger: | | |
| - length | 13.2 | 14.0 |

Table 2. Morphometric ratios of the ♂ holotype and ♀ paratype of *Leiurus hadb* sp. nov. from Saudi Arabia, including the ranges, mean \pm SD, and sample sizes (in parentheses) for length (L) and width (W).

| Ratio | <i>Leiurus hadb</i> sp. nov. | <i>Leiurus hadb</i> sp. nov. |
|--|------------------------------|---------------------------------|
| | ♂ holotype (N = 1) | ♀ paratype (N = 7) |
| Carapace W/ L | 1.24 | 1.14–1.24 1.19 \pm 0.038 |
| Pedipalp femur L/W | 4.04 | 3.33–4.16 3.79 \pm 0.30 |
| Pedipalp patella L/W = b | 3.62 | 3.08–3.743 3.35 \pm 0.23 |
| Pedipalp chela L/manus W | 6.88 | 3.18–6.66 5.74 \pm 1.16 |
| Pedipalp movable finger L/ manus ventral L | 2.31 | 2.08–2.87 2.28 \pm 0.26 |
| Pedipalp movable finger L/ carapace L | 2.31 | 2.08–2.87 2.28 \pm 0.26 |
| Pedipalp chela manus W/ carapace L | 0.31 | 0.30–0.66 0.37 \pm 0.13 |
| Leg III patella L/D = c | 4.10 | 4.15–5.54 4.83 \pm 0.57 |
| Pectine L/ carapace L | 1.43 | 1.03–1.32 1.14 \pm 0.10 |
| Metasoma I L/W | 1.35 | 1.26–1.39 1.31 \pm 0.05 |
| Metasoma II L/W | 1.71 | 1.65 \pm 1.85 1.74 \pm 0.07 |
| Metasoma III L/W = a | 1.92 | 1.80–2.06 1.89 \pm 0.10 |
| Metasoma IV L/W | 2.07 | 2.02–2.36 2.20 \pm 0.10 |
| Metasoma V L/W | 2.77 | 2.57–2.72 2.24 \pm 0.05 |
| Mid-pectine sensillar margin L/ metasoma I W | 0.22 | 0.10–0.16 0.13 \pm 0.01 |
| Fs = a.b.c | 28.66 | 23.57–37.61 25.73 \pm 6.36 |



Figure 8. Habitat at the type locality of *Leiurus hadb* sp. nov., from Wadi Rawdat al-hadb, Riyadh region Saudi Arabia.

Revision #3

Created 10 May 2024 21:25:02 by Kim dong hyeon

Updated 11 May 2024 03:11:08 by kkomodo