

# Chersonesometrus bastawadei (Prendini & Loria, 2020)

*Chersonesometrus bastawadei* Prendini & Loria, 2020. New species from India.



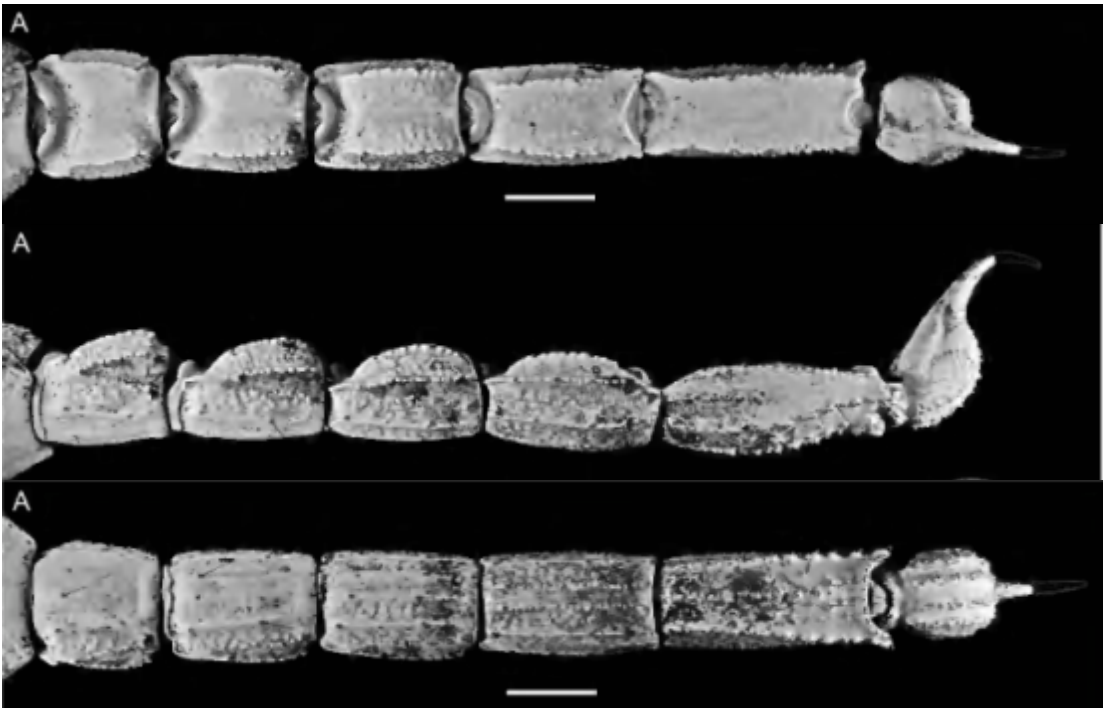
A. *Chersonesometrus bastawadei*, sp. nov., holotype 2 (AMNH), Naganath Temple, India.



A. *Chersonesometrus bastawadei*, sp. nov., holotype 2 (AMNH), Naganath Temple, India.



*Chersonesometrus bastawadei*, sp. nov., holotype 2 (AMNH), Naganath Temple, India.



A. *Chersonesometrus bastawadei*, sp. nov., holotype 2 (AMNH), Naganath Temple, India.

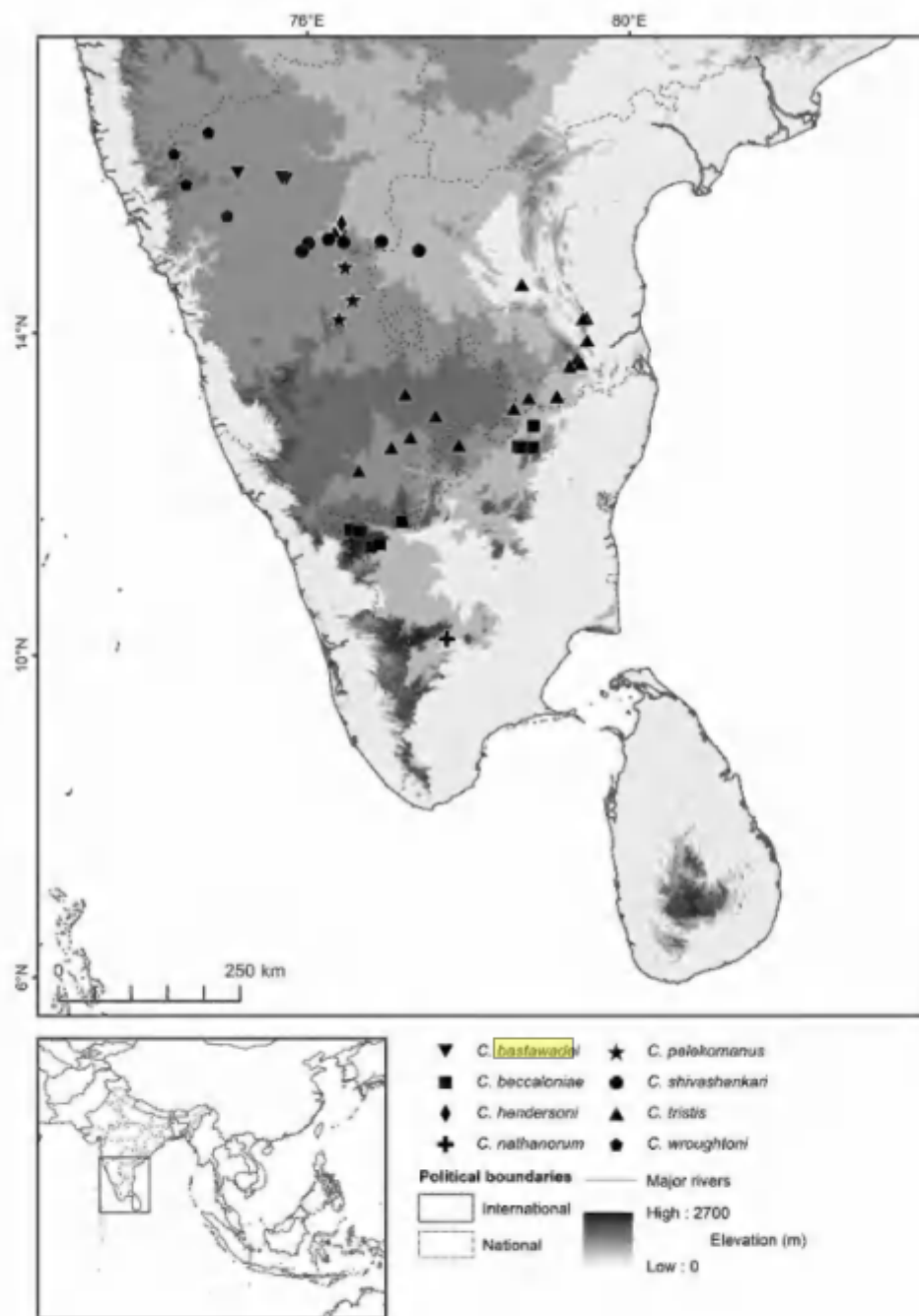
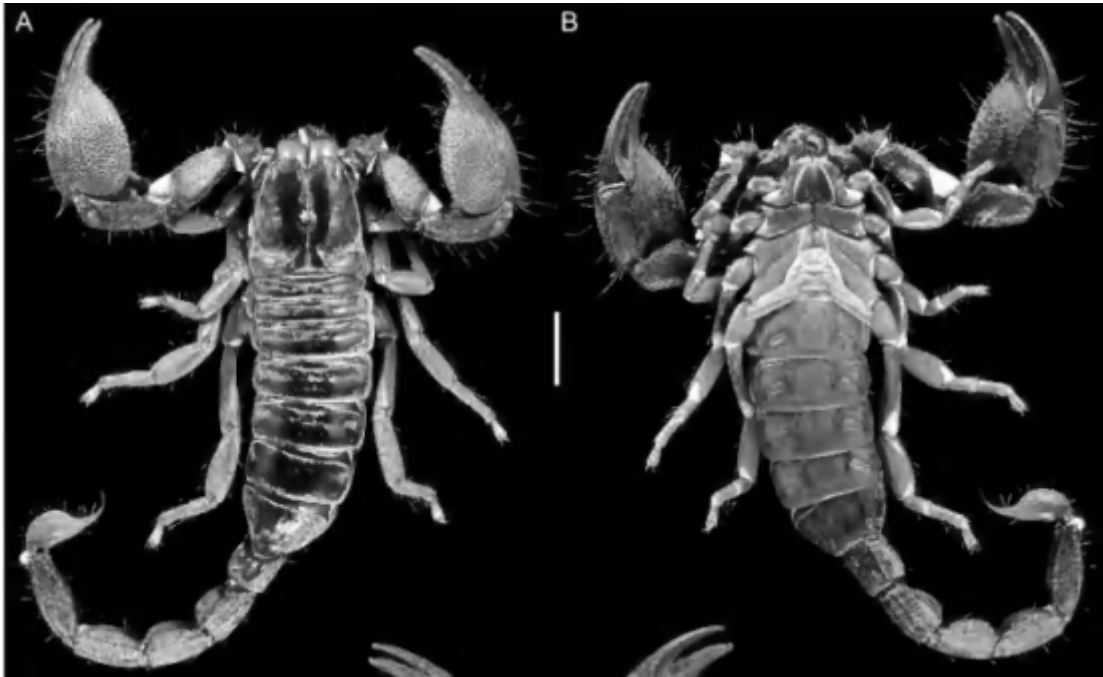


FIGURE 80. Map of South India and Sri Lanka, plotting known locality records of eight species of *Chersonesometrus* Couzijn, 1978, stat. nov. et stat. rev., based on material examined, and verified records from virtual museums and the literature: *Chersonesometrus bastawadei*, sp. nov.; *Chersonesometrus beccaloniae* (Kovářik, 2004), comb. nov.; *Chersonesometrus hendersoni*, sp. nov.; *Chersonesometrus nathanorum*, sp. nov.; *Chersonesometrus palekomanus* (Couzijn, 1981), comb. nov.; *Chersonesometrus shivashankari*, sp. nov.; *Chersonesometrus tristis* (Henderson, 1919), comb. nov.; *Chersonesometrus wroughtoni* (Pocock, 1899), comb. nov.



A, B. *Chersonesometrus bastawadei*, sp. nov., holotype 2 (AMNH), Naganath Temple, India.

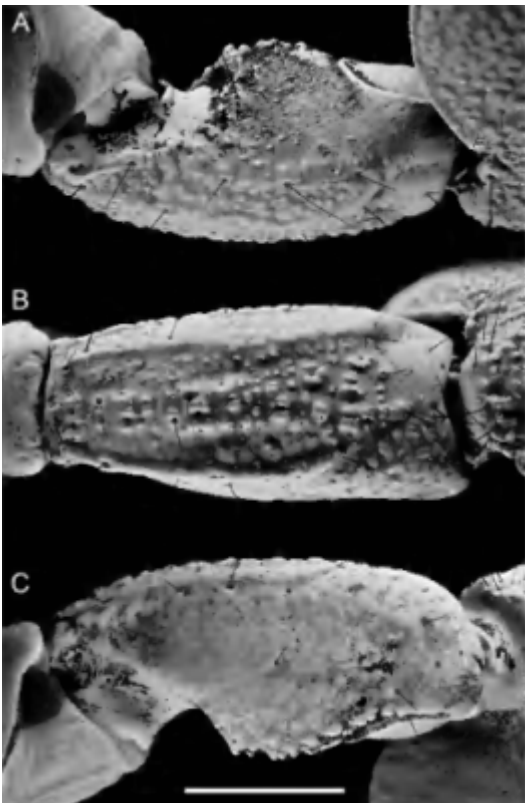


FIGURE 82. *Chersonesometrus bastawadei*, sp. nov., holotype 2 (AMNH), Naganath Temple, India, pedipalp patella: A. dorsal, B. retrolateral, and C. ventral aspects. Scale bar = 5 mm.



FIGURE 83. *Chersonesometrus bastawadei*, sp. nov., holotype 2 (AMNH), Naganath Temple, India, pedipalp chela: A. retrodorsal, B. ventral, and C. prolateral aspects. Scale bar = 5 mm.

SYSTEMATIC REVISION OF THE ASIAN FOREST SCORPIONS (HETEROMETRINAE SIMON, 1879),  
REVISED SUPRAGENERIC CLASSIFICATION OF SCORPIONIDAE LATREILLE, 1802, AND REVALIDATION  
OF RUGODENTIDAE BASTAWADE ET AL., 2005

LORENZO PRENDINI

Scorpion Systematics Research Group,  
Division of Invertebrate Zoology,  
American Museum of Natural History

STEPHANIE F. LORIA

Scorpion Systematics Research Group,  
Division of Invertebrate Zoology;  
Richard Gilder Graduate School,  
American Museum of Natural History

---

Revision #3

Created 7 May 2024 20:28:08 by Kim dong hyeon

Updated 7 May 2024 21:06:23 by Kim dong hyeon